

ARGOS EPS

Emergency Power Supply

- Emergency power supply 24V in case of mains failure
- Power capacity for two ARGOS W200 servo motors
- 2 Built-in batteries 12V/2.2AH (24V)
- Automatic battery test
- Automatic battery charger
- Manual battery test function
- Alarm relay output

ARGOS EPS

The ARGOS EPS is a very reliable emergency power supply 24V which can be perfectly applied in ventilation systems with servo motor controlled air inlets. In case of a mains power failure or control signal failure of the climate computer, the ARGOS EPS will supply 24V to the servo motor(s) to control the air inlets into the right (emergency) position.

The ARGOS EPS is equipped with a built-in battery pack 24V, suitable for one or two ARGOS W200 servo motors. Furthermore the ARGOS EPS has a battery recharging circuit which takes care for automatically recharging of the batteries. By use of the test button, the battery capacity can be tested manually at any time.



ARGOS PS1 / PS2

The ARGOS PS1 and PS2 are 24V power supply units for respectively one and two ARGOS W200 servo motors.

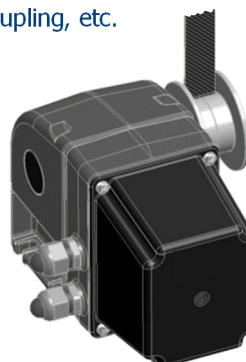


PS1

PS2

ARGOS W200

The ARGOS W200 24V servo winch motor has a pulling force of 200kg and a torque of 80Nm. With a high accuracy and slow rotation speed of 1 rpm, the winch motor can be applied to control air inlet systems. The ARGOS W200 servo motor is available in different versions, e.g. with single drum, double drum, chain coupling, etc.



OVERVIEW

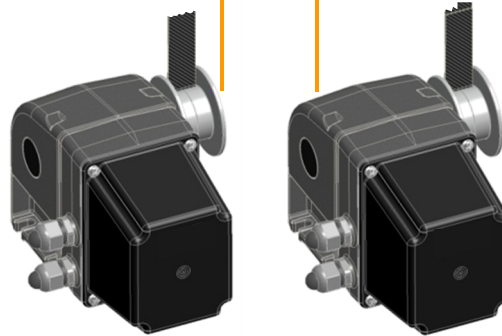
ARGOS M2/M3/S3



ARGOS PS1/PS2



ARGOS EPS



Technical specifications	ARGOS EPS
Housing	Plastic IP54
Dimensions (HxWxD)	228 x 118 x 203 mm
Power supply	24Vdc
Battery	2x 12Vdc/2.2AH maintenance free
External alarm output	Potential-free NC 24V, max. 1Amp.
Communication (optional)	LMSN
Approval	CE

Modifications reserved

Your dealer

Microfan B.V.

Industriestraat 23 • 5961 PH Horst • The Netherlands

Tel +31 (0)77 398 56 48 • Fax +31 (0)77 398 68 86

info@microfan.nl • www.microfan.com